

\$0 - 202 16813 113 Avenue, Edmonton

MLS® #E4396075

\$0

0 Bedroom, 0.00 Bathroom,
Office on 0.00 Acres

West Sheffield Industrial, Edmonton, AB

Fully Furnished 2nd floor office for lease.
Reception area plus 5 offices, large board room, Kitchen plus storage areas. Location is accessible from 170 street making it ideal location for a growing business. Plenty of parking .

Built in 1980

Essential Information

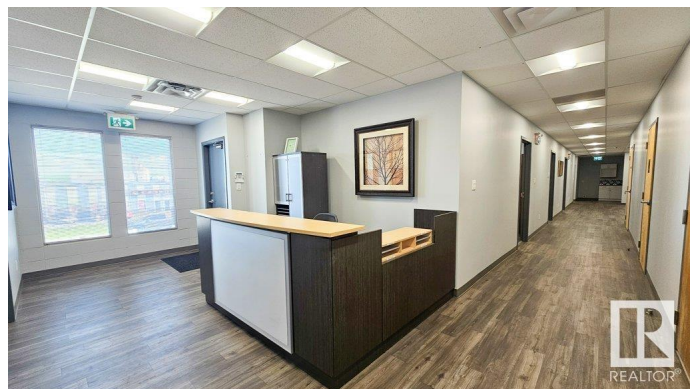
MLS® #	E4396075
Bathrooms	0.00
Acres	0.00
Year Built	1980
Type	Office
Status	Active

Community Information

Address	202 16813 113 Avenue
Area	Edmonton
Subdivision	West Sheffield Industrial
City	Edmonton
County	ALBERTA
Province	AB
Postal Code	T5M 2X2

Exterior

Exterior	Concrete
----------	----------



Construction Concrete

Additional Information

Date Listed July 4th, 2024

Days on Market 252

Zoning Zone 40

DATA IS DEEMED RELIABLE BUT IS NOT GUARANTEED ACCURATE BY THE REALTORS® ASSOCIATION OF EDMONTON. COPYRIGHT 2025 BY THE REALTORS® ASSOCIATION OF EDMONTON. ALL RIGHTS RESERVED. Trademarks are owned or controlled by the Canadian Real Estate Association (CREA) and identify real estate professionals who are members of CREA (REALTOR®, REALTORS®) and/or the quality of services they provide (MLS®, Multiple Listing Service®)

Listing information last updated on March 13th, 2025 at 2:02pm MDT